



12 Bridge Road

Aldershot, GU11 3DD

Guide Price £700,000

'Rarely available' has become a frustratingly overused term by too many estate agents. Bridge Road, however, is a road this 'phrase' was meant for; only one property has changed hands here within the last 12 years. 'New Manor' offers a staggering amount of space for the money, coming in at less than £300 per SQFT. This mock Tudor home was built by the previous occupants for their own occupation... and it shows. There are four double bedrooms, en-suite wet-room to master, study/bedroom five, three generous reception rooms, downstairs cloakroom, modern fitted kitchen/breakfast room, a near full width Victorian style conservatory and a family bathroom. Additionally, the current occupants pinched some space from the integral garage to create a utility area. Externally, there is a southerly rear garden that offers seclusion, driveway parking to the front for two cars and an integral double garage. Furthermore, the property can be found in a quiet tree-lined road of just seven houses.

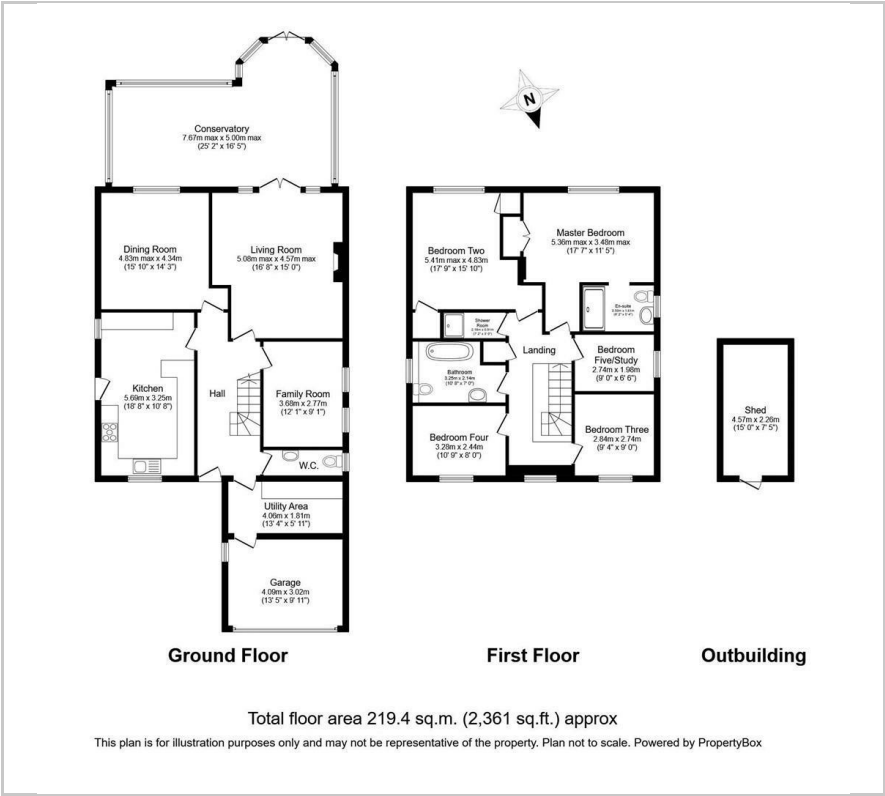
- Four Generous Bedrooms
- Bedroom Five/Study
- Three Large Receptions
- Kitchen/Breakfast Room
- Three Bath/Shower Rooms
- Downstairs Cloakroom
- South South-Westerly Garden
- EPC Energy Rating (D) 65

Viewing

Please contact our Fosters Sales Office on 01252 344333 if you wish to arrange a viewing appointment for this property or require further information.



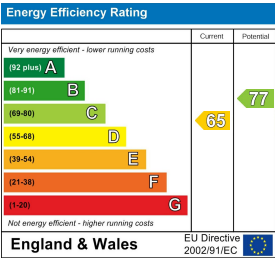
Floor Plan



Area Map



Energy Efficiency Graph



These particulars, whilst believed to be accurate are set out as a general outline only for guidance and do not constitute any part of an offer or contract. Intending purchasers should not rely on them as statements of representation of fact, but must satisfy themselves by inspection or otherwise as to their accuracy. No person in this firms employment has the authority to make or give any representation or warranty in respect of the property.